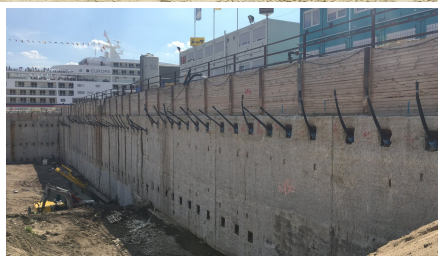


## Überseequartier Hamburg



### SHORT DESCRIPTION

Construction pit for 3 basement floors in diaphragm wall construction.

### THE PROJECT

The construction pit is crossed by the underground structure of the U4 and required, among other things, sophisticated back anchors between existing anchors on the adjacent bank walls. Due to the close proximity to the Elbe, flood protection of the deep excavation pit must be ensured.

The subsoil conditions, with near-surface groundwater, soft layers and numerous obstacles and existing structures, are among the most difficult in the Hamburg area.

### SERVICES IN DETAIL

Number of anchors: 550 pieces

Anchor tonnage: 138 t

Running meter anchor: 14,700 m

Number of posts: 1,200

Tonnage of bars: 373 t

Running meter posts: 15,000m

**Procedure:**

Semi-permanent anchor type ECO

Semi-permanent anchors type Mono

Completely removable strand anchor BBV-CR

Single bar piles Ø63.5

**FACTS**

---

<b>Location</b>	Hamburg , Germany
<b>Status</b>	completed
<b>Start of construction</b>	January 2017
<b>Completion</b>	December 2021
<b>Building owner</b>	Unibail Rodamco Group
<b>Contracting entity</b>	Arge Spezialtiefbau USQ

**SERVICES**

---

Excavation pits



---

<https://www.bbv-systems.com/en/projects/detail/ref/ueberseequartier-hamburg/>

Creation: 08.06.2026 20:32