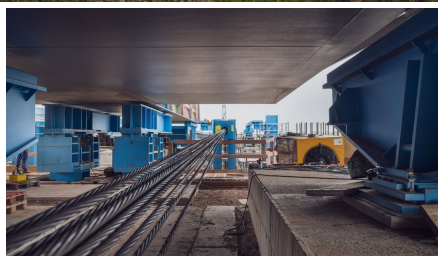


Elbebrücke, A 14, Wittenberge



SHORT DESCRIPTION

The project consists of the road bridge over the river Elbe, which is built as part of the new construction of the A14 Magdeburg – Schwerin motorway, located south of the city Wittenberge.

THE PROJECT

The new Elbe bridge is being built west of the existing B189 road bridge and is part of section 3 of the motorway A14 between Seehausen Nord junction and Wittenberge junction.

It is divided into an approach bridge with two separate superstructures (one in each direction) and a single superstructure bridge over river Elbe, consisting of a steel superstructure with an orthotropic composite deck.

The approach bridge is constructed with a post-tensioned middle beam cross section and consists of two superstructures, each having a width of 14.05 m between the railings and a height of 2.10 m. Having 14 spans with lengths of 44.50 m – 12 x 50 m – 50.65 m it reaches a total length of approx. 695 m.

The internal bonded BBV PT system is used for the longitudinal post-tensioning of the approach bridge superstructures.

Mild reinforcement is used in transversal direction.

The superstructures are being built span by span using the movable scaffolding system (MSS) method.

SERVICES IN DETAIL

- Bonded multistrand post-tensioning system
- Approx. 800 tons prestressing steel
- Production, delivery and installation of approx. 600 pcs. prefabricated tendons type BBV L22, approval Z-13.1-114, steel grade ST 1660/1860, 150mm², average length L= 50.30 m
- Tendon Prefabrication in 67240 Bobenheim-Roxheim
- Delivery to Wittenberge
- Prestressing and grout injection works performed by qualified BBV personnel

FURTHER INFORMATION

[Article and podcast in Impact – New construction of the Elbe bridge near Wittenberge](#)

FACTS

Location	Wittenberge , Germany
Status	completed
Construction volume (value of our services)	2.883 M EUR
Start of construction	February 2024
Completion	July 2025
Contracting entity	Implenia AG

SERVICES

Post-tensioning system

Bridge construction



<https://www.bbv-systems.com/en/projects/detail/ref/elbebruecke-a-14-wittenberg/>

Creation: 24.05.2026 13:33